

# MONTHLY MEMBERSHIP PROGRESS REPORT

District 33 S

Results as of: 8/31/2019

GMT:

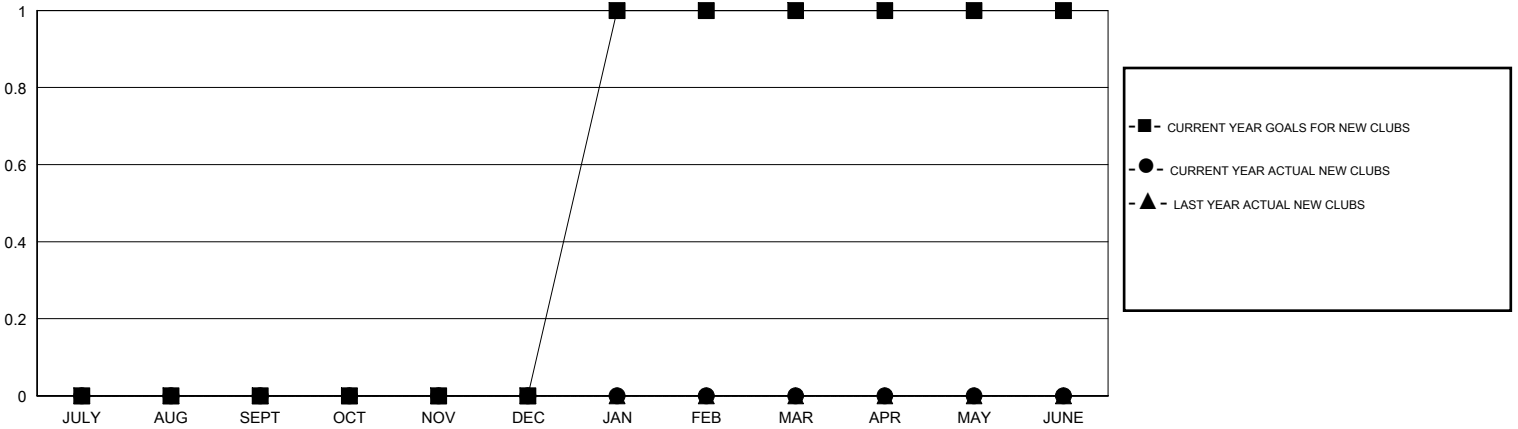
LOCATION MASSACHUSETTS

GMT CA

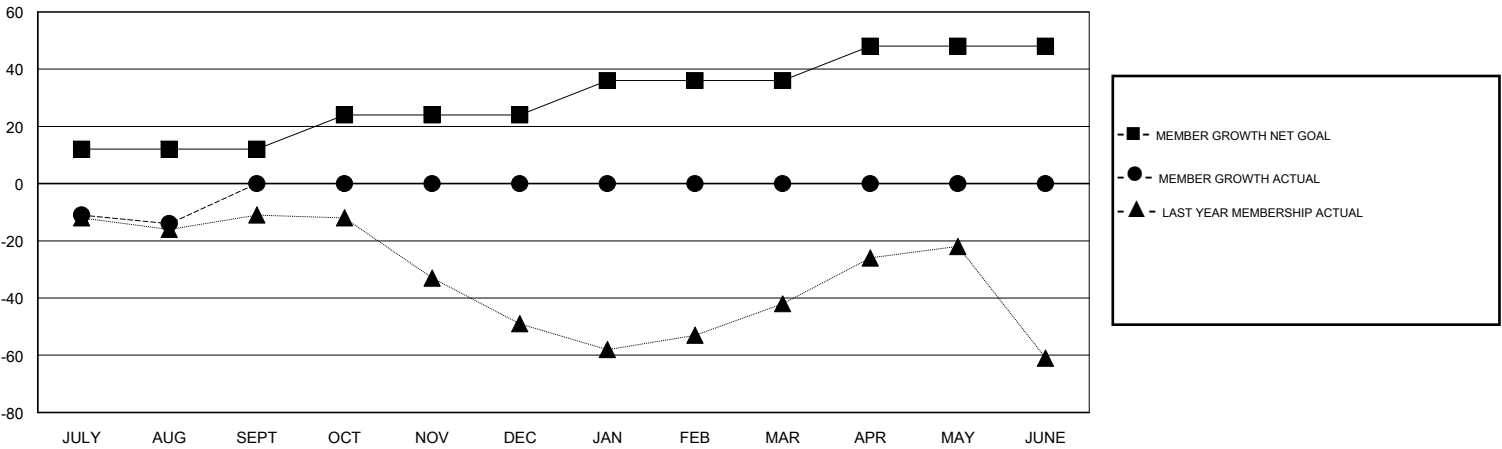
Clubs			
RESULTS FOR 2019-2020			
QUARTER	NEW CLUB GOAL	NEW CLUBS	DROPPED CLUBS
JULY/AUG/SEPT	0	0	0
OCT/NOV/DEC	0	0	0
JAN/FEB/MAR	1	0	0
APR/MAY/JUNE	0	0	0

Members			
RESULTS FOR 2019-2020			
QUARTER	MEMBER GROWTH NET GOAL	MEMBER GROWTH ACTUAL	DROPPED MEMBERS ACTUAL (including transfers)
JULY/AUG/SEPT	12	7	20
OCT/NOV/DEC	12	0	0
JAN/FEB/MAR	12	0	0
APR/MAY/JUNE	12	0	0

GOALS AND ACTUAL NEW CLUBS CUMULATIVE



GOALS AND ACTUAL MEMBERS CUMULATIVE



DROPPED CLUBS: 0	4 CLUBS OF 48 ADDED 1 OR MORE NEW MEMBERS	<u>GENDER DISTRIBUTION</u>
		MALE 1,067 (63.93%)
		FEMALE 602 (36.07%)
<u>DROPPED MEMBERS</u>	<a href="#">CLICK HERE FOR CUMULATIVE MEMBERSHIP DATA</a>	TOTAL FAMILY UNIT MEMBERS 236
DECEASED 2		FAMILY MEMBERS PAYING HALF DUES 121
CLUB CANCELLED 0		
OTHER 18		
<b>TOTAL 20</b>		